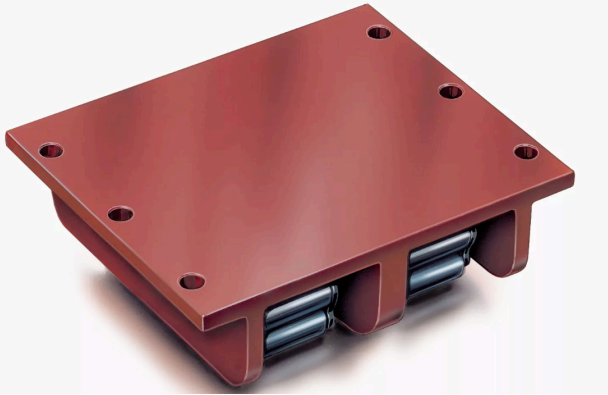


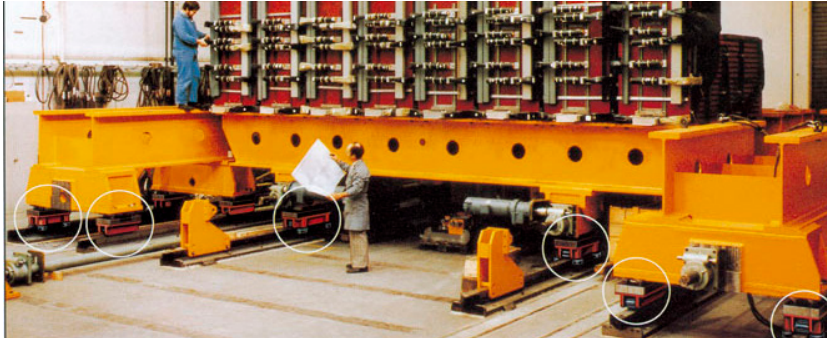


Ağır Yük Taşıma Arabası - Börkey ZAM-H Serisi - [25 - 330 ton]

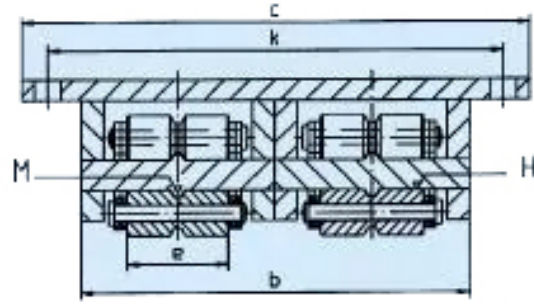
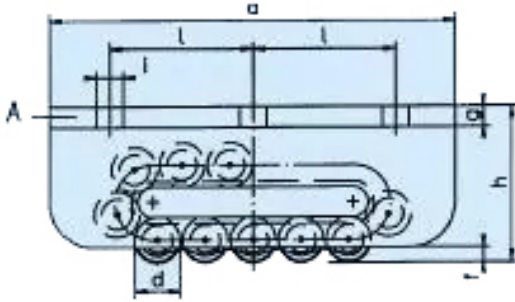
Roller Skate Express - ZAM-H Series - [25 - 330 tons]



- » Taşıma kapasite aralığı 25 – 330 ton
- » İki varyasyonda sunulur:
- » **Standart:** Uzun dönem, uzun mesafe
- » **Ağır iş 50CrV4:** Dinamik ve yoğun kullanım
- » Flanş plakasında 6 sabitleme deliği mevcuttur
- » Çift zinciri ve sırası sayesinde yük dengeli taşınır
- » Yürütme hızı maksimum 5 metre/dakika
- » Düşük taban yapısıyla dar bölgelere uyumlu
- » Korozyon koruması opsiyonel olarak sunulur
- » Yüzeyi bozuk zeminlerde çelik plaka kullanılır
- » Almanya üretimi, İmalatçı Boerkey GmbH



- » Maximum load capacity 25 – 330 tons
- » Available in two variations:
- » **Standard:** Long term, long distance
- » **Heavy duty 50CrV4:** Dynamic and intensive use
- » Have 6 bolt holes for roller skates are fixed
- » More stable operation and distribution of load
- » Ideal model for confined space, max speed 5 m/min
- » Corrosion protection is available as an option
- » Should be used with steel plate on bad surface
- » If necessary this model can be reduced in height
- » Made in Germany, Manufacturer Boerkey GmbH



Standart / Standard

Parça Part	Yük Kapasitesi Capacity		Boy [a] Length	Genişlik [c] Width	Yükseklik [h] Height	Makara Sayısı Number of Rollers	Makara Çapı Roller Dia. [d]	[b]	[e]	[f]	Ağırlık Weight
	ton	k.N	mm	mm	mm		Ø mm	mm	mm	mm	
ZAMH25t	25	250	210	280	76	2 X 15	18	200	51	6	16.0
ZAMH34t	34	340	220	305	87	2 X 13	24	226	60	10	22.0
ZAMH66t	66	660	270	340	104	2 X 13	30	260	68	10	35.0
ZAMH84t	84	840	320	360	115	2 X 17	30	280	68	10	55.5
ZAMH106t	106	1060	380	440	145	2 X 13	42	336	76	19	92.5
ZAMH138t	138	1380	530	480	165	2 X 17	50	364	86	19	168.0
ZAMH176t	176	1760	580	480	170	2 X 21	50	364	86	19	197.0
ZAMH250t	250	2500	650	560	190	2 X 23	50	410	100	20	294.0
ZAMH330t	330	3300	900	590	200	2 X 31	50	410	100	20	432.0

Ağır İş 50CrV4/ 50CrV4 - Heavy Duty

Parça Part	Yük Kapasitesi Capacity		Boy [a] Length	Genişlik [c] Width	Yükseklik [h] Height	Makara Sayısı Number of Roller	Makara Çapı Roller Dia. [d]	[b]	[e]	[f]	Ağırlık Weight
	ton	k.N	mm	mm	mm		Ø mm	mm	mm	mm	
ZAMH25t-50CrV4	25	250	210	280	76	2 X 15	18	200	51	6	16.0
ZAMH34t-50CrV4	34	340	220	305	87	2 X 13	24	226	60	10	22.0
ZAMH66t-50CrV4	66	660	270	340	104	2 X 13	30	260	68	10	35.0
ZAMH84t-50CrV4	84	840	320	360	115	2 X 17	30	280	68	10	55.5
ZAMH106t-50CrV4	106	1060	380	440	145	2 X 13	42	336	76	19	92.5
ZAMH138t-50CrV4	138	1380	530	480	165	2 X 17	50	364	86	19	168.0
ZAMH176t-50CrV4	176	1760	580	480	170	2 X 21	50	364	86	19	197.0
ZAMH250t-50CrV4	250	2500	650	560	190	2 X 23	50	410	100	20	294.0
ZAMH330t-50CrV4	330	3300	900	590	200	2 X 31	50	410	100	20	432.0