



Operating manual (Translation)

**SIKA**<sup>®</sup>  
gegr. 1901  
Dr. Siebert & Kühn GmbH & Co. KG

## Pneumatic hand pressure pump P40.2 / P60

Types P40.2 / P60



Please keep this operating manual for future reference.  
If the appliance is resold, please provide the operating manual along with it.

SiKA Dr.Siebert & Kühn GmbH & Co. KG • Struthweg 7–9 • D-34260 Kaufungen • Germany  
☎ +49 5605 803-0 • 📠 +49 5605 803-54 • [info@sika.net](mailto:info@sika.net) • [www.SIKA.net](http://www.SIKA.net)

Contents	Page
0 About this operating manual.....	3
1 Device description .....	4
1.1 Intended use .....	5
2 Savety instructions .....	6
3 Design and function.....	7
4 Initialsetup .....	8
5 Operation .....	8
5.1 Creating pressure .....	9
5.2 Creating vacuum .....	11
5.3 Pressure / vacuum measurements .....	11
6 Practical / usage guidelines.....	12
7 Problem solving.....	13
8 Maintenance/cleaning, storage and transportation.....	14
9 Disposal .....	14
10 Technical data and accessories .....	15

#### Copyright notice:

The reproduction, distribution and utilization of this operating manual as well as the communication of its contents to others without express authorization is prohibited. Offenders will be held liable for the payment of damages. All rights reserved in the event of the grant of a patent, utility model or design.

## 0 About this operating manual

- The operating manual is aimed at specialists and semi-skilled personnel.
- Before each step, read through the relevant advice carefully and keep to the specified order.
- Thoroughly read and understand the information in the section "Safety instructions".
- If the term 'pressure' is used in a very general way, then both positive pressure and negative pressure (vacuum) are intended.

If you have any problems or questions, please contact your supplier or contact us directly at:



Dr. Siebert & Kühn GmbH & Co. KG  
 Struthweg 7-9 • D - 34260 Kaufungen  
 ☎ 05605-803 0 • 📠 05605-803 54  
 info@sika.net • www.sika.net

### Hazard symbols and other symbols used::



**CAUTION! Crushing hazard!**

This symbol indicates hazards which could result in the crushing of fingers or hands.



**CAUTION! Risk of injury in the case of excessive pressure!**

This symbol indicates hazards which could arise from excessive pressure in a piece of equipment.



**ATTENTION! Damage to material!**

This symbol indicates actions which could lead to possible damage to material or environmental damage.



**ADHERE TO OPERATING MANUAL!**



Pay attention to and comply with information that is marked with this symbol.



Follow the specified instructions and steps. Adhere to the given order.



**NOTICE!**

This symbol indicates important notices, tips or information.



Check the specified points or notices.



Reference to another section, document or source.



Item

# 1 Device description

The hand pressure pump creates positive pressure or a vacuum for the inspection, adjustment or calibration of pressure devices of all kinds.

The hand pressure pump can be used for test items directly on location, thanks to its light weight and compact design.

When the hand pressure pump is used, it needs to be connected to a reference gauge and to the test item.

## Versions:

The hand pressure pump is available for two pressure ranges:

Type	Pressure range
P40.2	-0,95 ... 40 bar
P60	-0,95 ... 60 bar

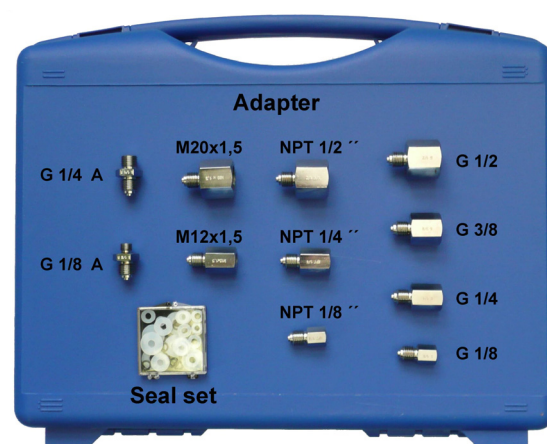
## Product contents:

- Hand pressure pump.
- Pressure hose:  
The pressure hose is supplied from the factory already screwed onto the hand pressure pump. The pressure hose should remain attached to the hand pressure pump during operation, storage and transportation. Removing the pressure hose should be avoided.
- Operation manual.
- Accessories (optional).

## Accessories:

Transportation cases, adapter sets, seal sets and reference gauges can be ordered as accessories.

- Transportation case (Item No.: EPPM040KOFFE01):  
The transportation case provides optimal protection for the hand pressure pump and other accessories with its tight-fitting rigid foam inlay. A document compartment is located in the lid behind the burl foam inlay.
- Adapter set (Item No.: EPPM040ADAPT01):  
The adapter set comprises 11 adapters for all common pressure connections with or without pins.
- Seal set (item No.: EPPM040DICHT01):  
The seal set contains flat seals made of plastic and O-rings for all common pressure connections.



- Replacement pressure hose with seals (item No.: EPPM040SCHLA01):  
The pressure hose is available separately as a replacement part with the necessary seals.
- SiKA reference gauge:  
Various reference models from SiKA's product range can be used.



## 1.1 Intended use

The P40.2 and P60 hand pressure pumps may only be used for the creation of air pressure or air vacuum. Use with any other media, particularly hydraulic oil, will result in damage to the hand pressure pump.

The hand pressure pump may not be attached to external pressure sources.

The delivered appliance is only guaranteed to operate safely if used for the intended purpose. The specified limits (→ Sect. 10: 'Technical data') may not be exceeded under any circumstances.

Before ordering and installation, check that the hand pressure pump is suitable for your needs.



## 2 Savety instructions



Before you install the P40.2 / P60, read through this operating manual carefully. If the instructions contained within it are not followed, in particular the safety guidelines, this could result in danger for people, the environment, and the device and the system it is connected to.

The P40.2 / P60 correspond to the state-of-the-art technology. This concerns the accuracy, the operating mode and the safe operation of the device.

In order to guarantee that the device operates safely, the operator must act competently and be conscious of safety issues.

SiKA provides support for the use of its products either personally or via relevant literature. The customer verifies that our product is fit for purpose based on our technical information. With this verification all hazards and risks are transferred to our customers; our warranty is not valid.

### Qualified personnel:

- ⚠ The personnel who are charged for the installation and operation of the P40.2 / P60 must hold a relevant qualification. This can be based on training or relevant tuition.  
The personnel must be aware of this operating manual and have access to it at all times.

### General safety instructions:

- ⚠ In all work, the existing national regulations for accident prevention and safety in the workplace must be complied with. Any internal regulations of the operator must also be complied with, even if these are not mentioned in this manual.
- ⚠ Never use the hand pressure pump together with an external pressure source. Do not attach an external pressure generator to the hand pressure pump.
- ⚠ Do not remove any attached components (test item, pressure hose, reference gauge) when the hand pressure pump is under pressure:
- ⚠ ➡ Open the pressure relief valve before removing any of the components.
- ⚠ Do not use Teflon tape to seal the pressure connections. Surplus Teflon tape can enter the hand pressure pump and damage it.
- ⚠ ➡ Only use adapters and seals that are available as accessories.
- ⚠ Non-pressurised storage: Only store the hand pressure pump with the pressure relief valve open. This ensures that no pressure can be built up by unintentional pumping movements.
- ⚠ Avoid external force of all kinds towards the hand pressure pump and its operating elements.
- ⚠ Do not use the hand pressure pump if it is damaged or defective.

### Special safety instructions:

Warnings that are specifically relevant to individual operating procedures or activities can be found at the beginning of the relevant sections of this operating manual.

### 3 Design and function

#### Operating elements:

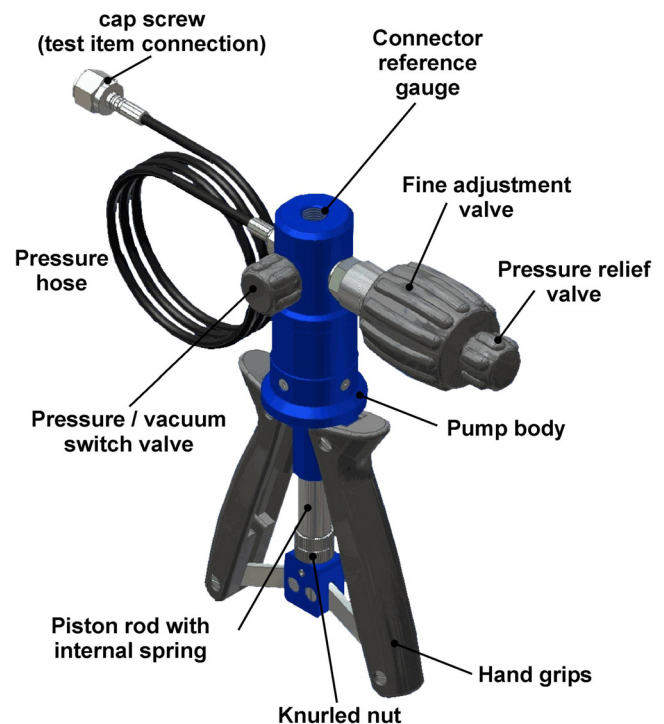
- Hand grips
- Fine adjustment valve (handwheel)
- Pressure relief valve (rotary knob)
- 'Pressure / vacuum' switch valve (rotary knob)
- Knurled nut (two parts with lock nut)

#### Connectors:

- Connector reference gauge
- Pressure hose with cap screw (test item connection)

#### Main components:

- Pump body
- Piston rod with internal spring



#### Function:

The test item respectively the pressure device to be tested (hereafter referred to as 'test item') is connected to the cap screw of the pressure hose.

Pumping is carried out by repeatedly pushing the hand grips together (for a vacuum, by pulling them apart). An internal spring returns the hand grips to their start position.

The pumping movements are transferred to the pistons in the pump body via the push rods.

Pressure or vacuum is generated there, depending on the switch valve setting. The construction of the hand pressure pump means that the same pressure/vacuum is generated for the test item as for the reference test gauge.

The pressure or the vacuum is set to the necessary value using the fine adjustment valve. Using the pressure relief valve, the pressure or the vacuum can be reduced as needed or completely released. The generated pressure or vacuum is displayed on the reference test gauge and compared with the measurements of the test item.

The knurled nut is used to set the spring preload settings and limit the pumping range.

## 4 Initialsetup

In order for the hand pressure pump to be operated, it is vital that its connections with the reference gauge and the test item are pressure-resistant. The pressure hose is supplied already bolted on to the hand pressure pump and should not be removed.



### ATTENTION! Damage to material!

The test item must have absolutely nothing adhering to it (oil, grease, water ...). Impurities can be transported into the hand pressure pump via the pressure hose, causing damage to the pump.



Maximum torque of the pressure connections!

Reference: 15 Nm

Test item: 15 Nm

Complete the following steps before use:

- Screw the reference gauge tightly to the top of the hand pressure pump with the correct seal (Connector reference gauge G 1/4).
- Clean the connection of the test item and ensure that no oil or other substances can enter into the pressure hose.
- Select the suitable adapters and seals for the test item's connection.
- Join the adapters and seals to the test item and the cap screw of the pressure hose (G 1/4). Whilst doing this ensure that the O-ring is correctly positioned in the cap screw.



### FIRST PUMPING PROCESS

The first pumping process can require a large amount of energy due to adhesive forces.

- Carry out the first pumping process with the pressure relief valve open.

## 5 Operation

Generating pressure and generating vacuum not only differ in their operating procedures and their range of settings, but also in the amount of energy needed to work the operating elements.

Adhere to the following safety guidelines when operating the hand pressure pump:



### CAUTION! Crushing hazard!

During the pumping procedure ensure that fingers or other body parts are kept away from the area between the hand grips and the piston rod.



### ATTENTION! Damage to switch valve!

Only operate the switch valve with the pressure relief valve open.

Using the switch valve under pressure causes damage to the hand pressure pump components.





### ATTENTION! Damage to valve stop!

If put under too much strain the stop and the hand pressure pump will be damaged.  
Only continue to tighten the valves (the fine adjustment, pressure relief and switch valves) by hand, once the stop has been reached.

### Before creating pressure or vacuum consider:

Before you create pressure or vacuum with the hand pressure pump you should check for the following requirements:

- ☐ The reference gauge is connected to the hand pressure pump.
- ☐ The test item is joined to the pressure hose with the correct adapters and seals.
- ☐ All pressure connections are correctly in place, so that they resist pressure.

## 5.1 Creating pressure

As the counterpressure of the test item increases, more energy is needed for the pumping movements of the hand grips.



### ATTENTION! Damage to test item!

Adhere to the maximum pressure of the test item!  
Only create an admission pressure with the hand grips that is lesser than the necessary testing pressure. Following this carefully increase the pressure using the fine adjustment valve.

In practical use the following operation methods have proved themselves to be useful:

Operation with one hand:



20 bar can be built up safely and smoothly.

Above 20 bar, creating pressure becomes progressively more difficult.

Operation with both hands:



35 ... 40 bar can be generated quite quickly.

Above 40 bar the pressure should be increased with the fine adjustment valve.

Pumping against a base:



50 ... 55 bar can be created in this way.

In this process it is important that the lower hand grip is placed on a non-slip base.

### Pressure creation - operating steps

- ① Switch on reference gauge and test item (if necessary).
- ② Close pressure relief valve:
  - Turn the knob of the valve in a clockwise direction until the stop is reached.
- ③ Set the switch valve to 'pressure':
  - Turn the knob of the valve in a clockwise direction until the stop is reached.
- ④ Create pressure:
  - Push the hand grips together: The pressure is built up.
  - Repeat the pumping movements until the necessary testing pressure has roughly been reached.
- ⑤ Adjust the testing pressure.
 

The necessary testing pressure is precisely adjusted with the fine adjustment valve:

  - Turn the handwheel in a clockwise direction to increase the pressure.
  - Turn the handwheel of the valve in an anti-clockwise direction to reduce the pressure.
  - Set the necessary testing pressure by turning the wheel as needed.

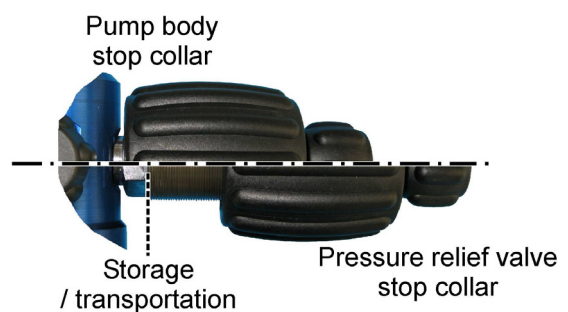


### Increasing pressure with the fine adjustment valve:

Alternatively, above ~ 20 ... 30 bar you can increase the pressure with the fine adjustment valve.

- Turn the handwheel in a clockwise direction in the direction of the 'pump body stop collar'.

Depending on the pressure of the test item and the setting of the handwheel, pressure increases of max. 15 ... 30 bar can be achieved quite easily.



#### FINE ADJUSTMENT VALVE

When it is not under pressure the fine adjustment valve moves very freely. The wide handwheel of the fine adjustment valve can be moved into the needed position very easily using with the palm of the hand.

## 5.2 Creating vacuum

### Vacuum creation - operating steps

- ① Switch on reference gauge and test item (if necessary).
- ② Close pressure relief valve:
  - Turn the knob of the valve in a clockwise direction until the stop is reached.
- ③ Set the switch valve to 'vacuum':
  - Turn the knob of the valve in an anti-clockwise direction until the stop is reached.
- ④ Create vacuum:
  - Push the hand grips together: The springs create the first negative pressure, but cannot completely open the hand grips.
  - Now pull the hand grips apart until the stop is reached.
  - Push the hand grips together again: the vacuum is increased.
  - Repeat this process several times (depending on the volume of the test item) until the desired vacuum has been reached.
- ⑤ Adjust the testing pressure. The necessary testing pressure is adjusted precisely with the fine adjustment valve:
  - Turn the handwheel of the valve in a clockwise direction to decrease the vacuum.
  - Turn the handwheel of the valve in an anti-clockwise direction to increase the vacuum.
  - Set the necessary testing vacuum by turning the wheel as needed.



## 5.3 Pressure / vacuum measurements

For adjustments, calibrations or an inspection of accuracy, it is vital that the test item and the reference have the same pressure / vacuum.

The pressure / vacuum needed for the test points is built up and adjusted with the hand pressure pump (→ Sect. 5.1 + 5.2).

The pressure relief valve makes a regulated, continuous decrease in pressure possible, enabling measurements to be carried out accurately and simply even when the pressure is falling.

The necessary procedures for measuring pressure or vacuum are configured by the operator.

### Carrying out the pressure or vacuum measurements:

- Carry out the necessary tests and measurements.
- Document your results.

### Completing the pressure or vacuum measurements:

Once the pressure or vacuum measurements have been completed, the positive or negative pressure in the hand pressure pump, the test item and in the pressure hose need to be brought into balance.



#### CAUTION! Risk of injury through excessive pressure!

Do not remove any connected components (test item, pressure hose, reference gauge) if the hand pressure pump is under pressure.

☞ Open the pressure relief valve before removing any of the components.

#### ☞ ⑥ Releasing pressure / equalising vacuum:

Turn the pressure relief valve knob 2-3 rotations in an anti-clockwise direction and wait until there is no longer any positive or negative pressure.

#### ☞ Remove the test item with adapters and seals from the pressure hose.

#### ☞ Put the hand pressure pump away along with any accessories which have been used.

(→ Sect.. 8: 'Maintenance/cleaning, storage and transportation')



#### REFERENCE GAUGE + PRESSURE HOSE

The common reference models fit into the gaps in the transportation case and do not need to be removed. The pressure hose can also remain attached to the hand pressure pump. It should generally never be removed.

## 6 Practical / usage guidelines

### Preloading the springs / stroke limitation:

The preloading of the springs changes how much power the hand grips have to reset themselves. The stroke limitation change the size of the pumping strokes and therefore the pumping volume of the hand pressure pump.

The spring preload settings and the stroke limitation are set with the knurled nut.



#### KNURLED NUT

The knurled nut is made up of two parts. The upper part is used to adjust the spring preload settings and the pumping stroke. The lower part is the lock nut and fixes the setting.

### Setting the spring preload / stroke limitation:

#### ☞ Loosen the countering of the knurled nut.

#### ☞ Set the desired spring preload / pumping stroke with the knurled nut.

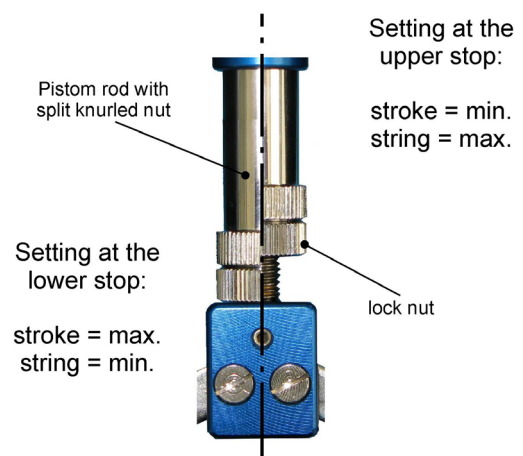
Turn to the upper stop:

- the spring preload increases.
- the pumping stroke decreases.

Turn to the lower stop:

- the spring preload decreases.
- the pumping stroke increases.

#### ☞ Fix the setting with the lock nut of the knurled nut.



## Pumping process:

The pressure increase per pump stroke can be set with the stroke limitation and the settings of the fine adjustment valve.

Furthermore the pressure increase is dependent on the current counterpressure, the total volume of the test item and the energy of the pumping movements.

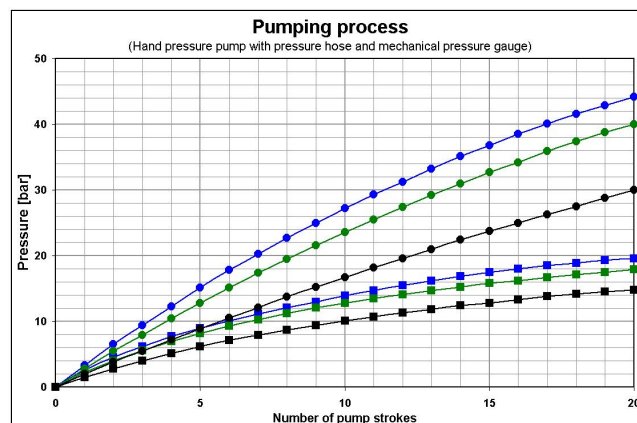
The following diagram shows, as an example, the pumping process with the hand pressure pump at different settings.

Stroke limitation:

- max. pump stroke (● ● ●)
- min. pump stroke (■ ■ ■)

Setting the fine adjustment valve:

- Pump body stop collar (—)
- Storage / transportation (—)
- Pressure relief valve stop collar (—)



## 7 Problem solving



### ATTENTION! Damage to material!

The hand pressure pump cannot be repaired by the operator! In the case of a defect, the appliance must be sent back to the manufacturer for repair.

Never open up the hand pressure pump and / or carry out any repairs yourself.

The following table details what problems you can solve yourself and how to solve them.

Problem	Possible cause	Remedy
Pressure cannot be built up (creation of vacuum).	Defective / incorrect seal.	Check seal (size / material / wear).
	Seal incorrectly positioned.	Check positioning of seal.
	Pressure relief valve open.	Close pressure relief valve.
	Switch valve in mid-position.	Turn the switch valve to the desired position.
Pressure / vacuum fades (unstable).	Leakage in the test item.	Check connections.
		Check positioning of seals.
The first pump stroke is stiff.	Not a defect. Due to adhesive forces the first pumping process requires a large amount of energy.	Carry out the first pumping process with the pressure relief valve open.
Pumping stroke stiff.	High counterpressure in the test item.	Increase the pressure with the handwheel of the fine adjustment valve.



## 8 Maintenance/cleaning, storage and transportation

### Maintenance:

No maintenance is required for the hand pressure pump and it cannot be repaired by the operator either. In the case of a defect the appliance must be sent back to the manufacturer for repair.

- ✚ Check the seals and O-rings for fractures and wear before use.
- ✚ Replace defective or worn seals and O-rings.

### Cleaning:

Clean the hand pressure pump with a dry or slightly damp lint-free cloth.

Do not use sharp objects or aggressive cleaning agents to clean the pump. Avoid contact with fluid or aggressive media.

### Storage and transportation:


For storage and transportation we recommend our transportation case, which is available as an accessory.

The tight-fitting rigid foam inlay offers optimum protection for the hand pressure pump with pressure hose and accessories. A reference gauge of a suitable size can be transported and stored in the case without being removed.

Before storage, we recommend that you consider the following points:

- ☐ Clean the hand pressure pump and the accessories.
- ☐ Turn the fine adjustment valve in a clockwise direction until the thread is no longer visible (→ illustration).
- ☐ Check that the switch valve is at its usual setting (pressure/vacuum).
- ☐ Open the pressure relief valve.



 **IMPORTANT:** Do not store under pressure!  
Only store the hand pressure pump with the pressure relief valve open. This ensures that no pressure can be built up by unintentional pumping movements.

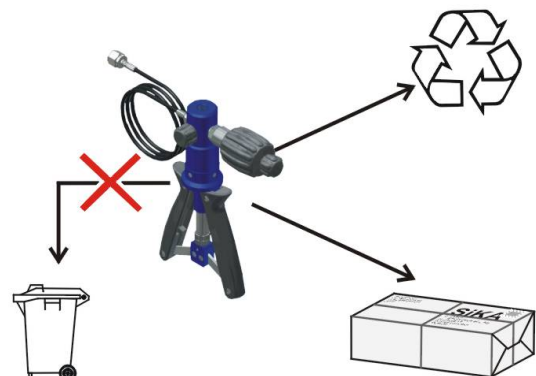
## 9 Disposal

The hand pressure pump consists of various different materials and should not be disposed of with household waste.

- ✚ Take the hand pressure pump to your local recycling plant

or

- ✚ send the hand pressure pump back to your supplier or to SiKA.



## 10 Technical data and accessories

Type	P40.2	P60
Pump with hose		
Pressure range:		
- Positive pressure	40 bar	60 bar
- Vacuum	-0.95 bar	-0.95 bar
Medium:	Air	
Connection:		
- Reference	G ¼	
- Test item	Pressure hose (1 m) with cap screw G ¼	
Dimensions:		
~ 240 x 170 x 50 mm		
Weight:		
~ 1,1 kg		

Accessories	
Adapter set:	G 1/8 , G 1/4 , G 3/8 , G 1/2 NPT 1/8" , NPT 1/4" , NPT 1/2" M12x1,5 , M20x1,5 G 1/8 A , G 1/4 A
Item No.:	EPPM040ADAPT01
Seal set:	Flat seals made of plastic and O-rings
Item No.:	EPPM040DICHT01
Transportation case:	
- Lid	Burl foam with document compart- ment
- Main compartment	Tight-fitting rigid foam inlay for pump and accessories
- Dimensions	~ 450 x 370 x 110 mm
- Weight with pump and accessories	~ 3,1 kg
Item No.:	EPPM040KOFFE01
Pressure hose:	Replacement pressure hose with seals
Item No.:	EPPM040SCHLA01




Illustration (example):  
Hand pressure pump with accesso-  
ries

