



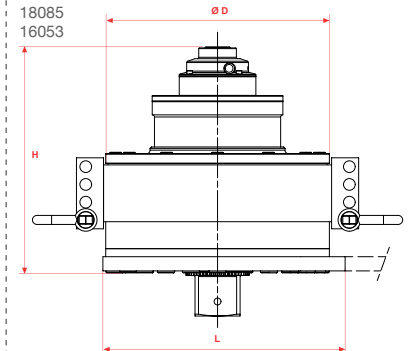
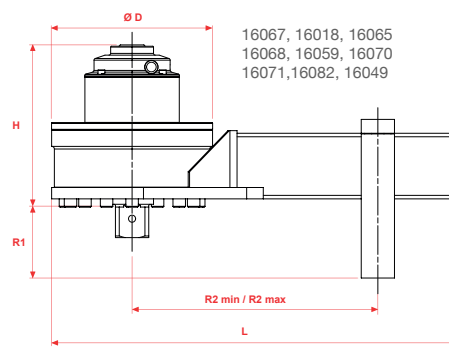
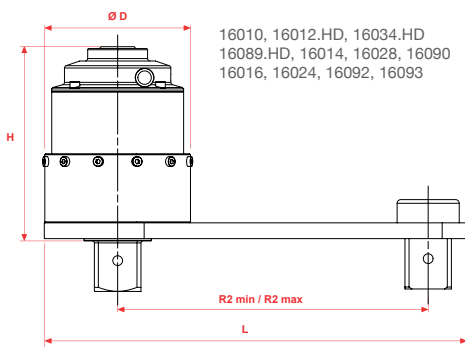
Standart Seri Mekanik Tork Artırıcılar

Standard Mechanical Torque Multipliers



- » Tork uygulama hassasiyeti $\pm\%4$ standart.
- » 1.700 - 47.500 N.m arası farklı modeller.
- » Norbar tork sensörleri bağlanabilir, tork ölçümü yapılabilir.
- » Yüksek aktarım oranlarıyla torklama işlemini kolaylaştırır.
- » Kızaklı tip destek ayağı ile zor alanlarda kolay torklama.
- » Geri dönüş kilit mekanizması güvenli çalışma ortamı sunar.
- » Dayanıklı, sağlam ve uzun ömürlü yapı.

- » Accuracy guaranteed better than $\pm\%4$.
- » Up to 47.500 N.m different options.
- » High ratios allow the use of a small torque wrench.
- » A variety of reaction styles are available for maximum versatility.
- » Anti Wind-Up Ratchet system allowing safer and more practical operation.
- » Electronic torque transducers can be fitted for precise torque monitoring.
- » Robust construction means minimal maintenance and long life.



Parça Part	Kapasite Capacity		Aktarım Ratio	Kilit Sistemi Lock System	Torkmetre Torque Square	Lokma Socket	Ağırlık Weight	D	H	L	R1	R2 min	R2 max
No.	N.m	Lbf.ft	#	#	inç	inç	kg	mm					
16010	1.700	1.250	5:1	-	1/2"	3/4"	5.2	108	83	303	-	83	216
16012.HD	1.700	1.250	5:1	-	3/4"	1"	5.4	108	98	303	-	83	216
16034.HD	1.700	1.250	25:1	-	1/2"	1"	6.8	108	98	303	-	83	216
16089.HD	1.700	1.250	25:1	AWUR	1/2"	1"	8.9	108	114	303	-	83	216
16014	3.400	2.500	5:1	-	3/4"	1"	7.2	119	106	355	-	86	263
16028	3.400	2.500	25:1	-	1/2"	1"	8.9	119	127	355	-	86	263
16090	3.400	2.500	25:1	AWUR	1/2"	1"	10	119	132	355	-	86	263
16016	3.400	2.500	5:1	-	3/4"	1.1/2"	7.2	119	106	355	-	86	263
16024	3.400	2.500	25:1	-	1/2"	1.1/2"	8.9	119	128	355	-	86	263
16092	3.400	2.500	25:1	AWUR	1/2"	1.1/2"	10	119	134	355	-	86	263
16093	3.400	2.500	125:1	AWUR	1/2"	1.1/2"	11.5	119	159	355	-	86	263
16067	6.000	4.500	5:1	-	3/4"	1.1/2"	14.4	144	136	423	84	150	331
16018	6.000	4.500	25:1	-	1/2"	1.1/2"	15.9	144	157	423	84	150	331
16065	6.000	4.500	25:1	AWUR	1/2"	1.1/2"	17	144	162	423	84	150	331
16068	6.000	4.500	125:1	AWUR	1/2"	1.1/2"	18.5	144	188	423	84	150	331
16059	9.500	7.000	25:1	-	3/4"	1.1/2"	24.6	184	166	448	84	175	351
16070	9.500	7.000	25:1	AWUR	3/4"	1.1/2"	25.7	184	162	448	84	175	351
16071	9.500	7.000	125:1	AWUR	1/2"	1.1/2"	27.2	184	182	448	84	175	351
16082	20.000	14.700	25:1	-	3/4"	2.1/2"	45	212	208	609	-	320	500
16049	20.000	14.700	125:1	AWUR	1/2"	2.1/2"	45.4	212	235	609	-	320	500
18085	34.000	25.000	87.5:1	AWUR	3/4"	2.1/2"	48	248	281	325	-	-	-
16053	47.500	35.000	125:1	AWUR	3/4"	2.1/2"	102.1	315	322	341	-	-	-