

# HYTENSION

## Subsea Hydraulic Bolt Tensioning Tools



**Boltight manufacture standard and custom tools for Subsea use. The Subsea range of bolt tensioners have been designed to operate at 1500 bar fitted with one self-sealing quick connect nipple.**

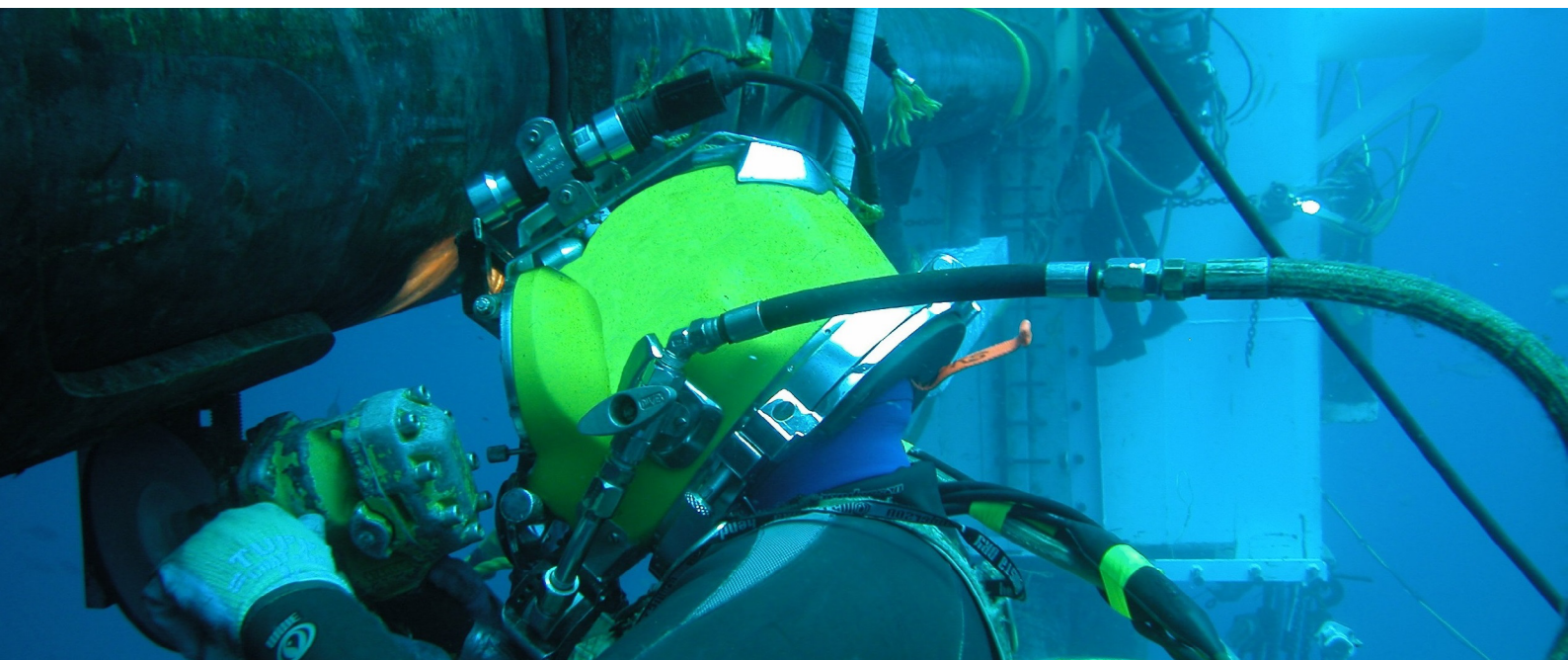
### SPECIFICATIONS

- Twin connectors – optional extra.
- Nickel Plated but variety of corrosion protection finishes.
- Designed to operate at 1500 bar.
- Self-sealing quick connect nipple.
- Fits all standard pipe flanges.
- Easy piston return.
- High Initial Bolt Stress
- Lower cost solid reaction nuts also available.
- Long 30mm Stroke

**Combined body and bridge, eye bolt, maximum piston stroke indicator and a split reaction nut.**

### BENEFITS

- 5 cylinders available to cover entire range.
- 30mm stroke available for single activation subsea - saving diver time.
- Designed to conform to the European Pressure Equipment Directive.
- CE Marked.
- Stock Item.
- Full H&S and Maintenance Instruction Manual.
- Misalignment compensation features to minimise damage on badly aligned joints.
- All tools are pressure tested and issued with a test certificate.
- Any number of tools can be connected for simultaneous operation.



# HYTENSION

## Subsea Hydraulic Bolt Tensioning Tools

Tool No	Bolt Dia Inches	Bolt Dia mm	Max Load kN	Max Load Ton.f	Tool OD mm	Height with split reaction nut mm	Height with solid reaction nut mm
<b>G1</b>	7/8"	M24	361	36.2	90	174	156
<b>G1</b>	1"	M27	361	36.2	90	174	156
<b>G1</b>	1-1/8"	M30	361	36.2	90	174	156
<b>G1</b>	1-1/4"	M33	361	36.2	90	174	156
<b>G2</b>	1-3/8"	M36	544	54.6	109	180	169
<b>G2</b>	1-1/2"	M39	544	54.6	109	180	169
<b>G2</b>	1-5/8"	M42	544	54.6	109	180	169
<b>G3</b>	1-3/4"	M45	812	81.5	130	203	188
<b>G3</b>	1-7/8"	M48	812	81.5	130	203	188
<b>G3</b>	2"	M52	812	81.5	130	203	188
<b>G4</b>	2-1/4"	M56	1550	155.5	172	242	232
<b>G4</b>	2-1/2"	M64	1550	155.5	172	242	232
<b>G4</b>	2-3/4"	M72	1550	155.5	172	242	232
<b>G5</b>	3"	M76	2562	257	215	292	268
<b>G5</b>	3-1/4"	M80	2562	257	215	292	268
<b>G5</b>	3-1/2"	M85	2562	257	215	292	268
<b>G5</b>		M90	2562	257	215	292	268



Hose Reel and Downline Hose



Stainless Steel Subsea Pump

### Hytension

Unit 2 Junction 10 Business Park  
Bentley Mill Way  
Walsall WS2 0LE  
United Kingdom

Tel: +44 845 500 5556  
Fax: +44 845 500 5557  
sales@hytension.com