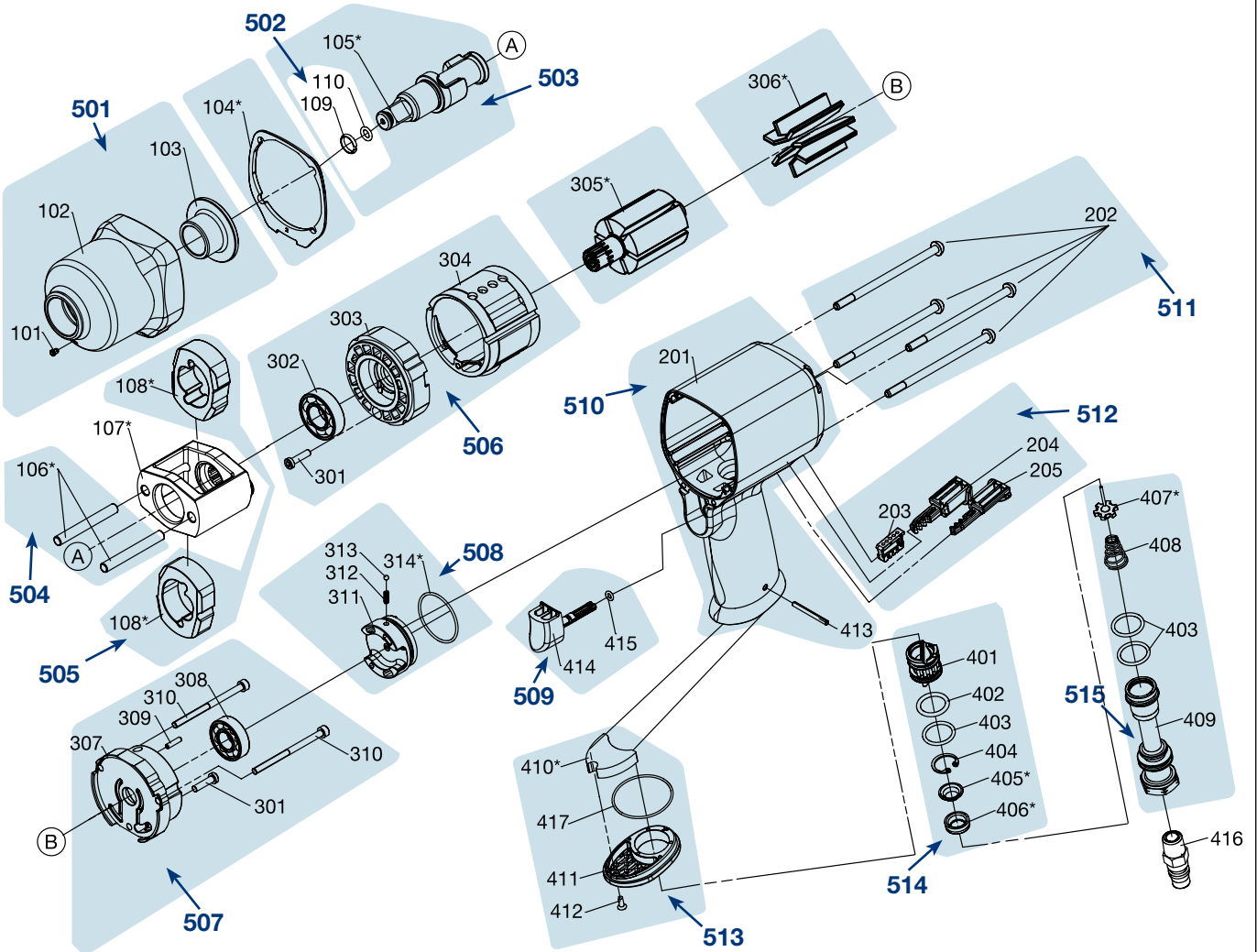

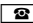

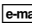






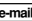
Ersatzteile 9012 EL-SPC



	<i>HAZET</i> No.	Bezeichnung	Designation	Désignation	
104	9012 EL-SPC-01/5	Dichtung Inhalt: 104 (5x)	Gasket Contents: 104 (5x)	Joint d'étanchéité Contenu: 104 (5x)	1
107	9012 EL-SPC-02	Schlagwerkskorb Inhalt: 107	Hammer frame Contents: 107	Cage de mécanisme de frappe Contenu: 107	1
305	9012 EL-SPC-03 N	Rotor Inhalt: 305	Rotor Contents: 305	Rotor Contenu: 305	1
306	9012 EL-SPC-04/7	Lamellen Inhalt: 306 (7x)	Blades Contents: 306 (7x)	Lamelles Contenu: 306 (7x)	1
501	9012 EL-SPC-05/3	Schlagwerk Gehäuse kompl. Inhalt: 101, 102, 103	Hammer case Contents: 101, 102, 103	Boîtier de mécanisme de frappe Contenu: 101, 102, 103	1
502	9012 EL-SPC-06/2	Ring-Satz Inhalt: 109, 110	Ring set Contents: 109, 110	Jeu d'anneaux Contenu: 109, 110	1
503	9012 EL-SPC-07/3	Vierkant mit Ring-Satz Inhalt: 105, 109, 110	Anvil with ring set Contents: 105, 109, 110	Carré avec mit jeu d'an- neaux Contenu: 105, 109, 110	1

	HAZET No.	Bezeichnung	Designation	Désignation	
504	9012 EL-SPC-08/2	Stift	<i>Hammer pin</i>	<i>Goupille</i>	1
		Inhalt: 106 (2x)	<i>Contents: 106 (2x)</i>	<i>Contenu: 106 (2x)</i>	
505	9012 EL-SPC-09/2	Hammer	<i>Hammer</i>	<i>Marteau</i>	1
		Inhalt: 108 (2x)	<i>Contents: 108 (2x)</i>	<i>Contenu: 108 (2x)</i>	
506	9012 EL-SPC-010/4	Zylindereinheit	<i>Cylinder unit</i>	<i>Unité de vérin</i>	1
		Inhalt: 301, 302, 303, 304	<i>Contents: 301, 302, 303, 304</i>	<i>Contenu: 301, 302, 303, 304</i>	
507	9012 EL-SPC-011/6	Hinteres Lager	<i>Rear bearing</i>	<i>Palier arrière</i>	1
		Inhalt: 301, 307, 308, 309, 310 (2x)	<i>Contents: 301, 307, 308, 309, 310 (2x)</i>	<i>Contenu: 301, 307, 308, 309, 310 (2x)</i>	
508	9012 EL-SPC-012/4	Luftregulator	<i>Air regulator</i>	<i>Régulateur d'air</i>	1
		Inhalt: 311, 312, 313, 314	<i>Contents: 311, 312, 313, 314</i>	<i>Contenu: 311, 312, 313, 314</i>	
509	9012 EL-SPC-013/2	Abzugshebeln	<i>Trigger</i>	<i>Evier de tirage</i>	1
		Inhalt: 414, 415	<i>Contents: 414, 415</i>	<i>Contenu: 414, 415</i>	
510	9012 EL-SPC-014/2	Gehäuse	<i>Housing</i>	<i>Boîtier</i>	1
		Inhalt: 201, 413	<i>Contents: 201, 413</i>	<i>Contenu: 201, 413</i>	
511	9012 EL-SPC-015/4	Gehäuseschraube	<i>Bolt</i>	<i>Vis de boîtier</i>	1
		Inhalt: 202 (4x)	<i>Contents: 202 (4x)</i>	<i>Contenu: 202 (4x)</i>	
512	9012 EL-SPC-016/3	Umsteller	<i>Reverse lever</i>	<i>Ajusteur de tension</i>	1
		Inhalt: 203, 204, 205	<i>Contents: 203, 204, 205</i>	<i>Contenu: 203, 204, 205</i>	
513	9012 EL-SPC-017/4	Luftauslass	<i>Air exhaust</i>	<i>Échappement d'air</i>	1
		Inhalt: 410, 411, 412, 417	<i>Contents: 410, 411, 412, 417</i>	<i>Contenu: 410, 411, 412, 417</i>	
514	9012 EL-SPC-018/6	Ventileinheit	<i>Valve set</i>	<i>Unité de soupape</i>	1
		Inhalt: 401, 402, 403, 404, 405, 406	<i>Contents: 401, 402, 403, 404, 405, 406</i>	<i>Contenu: 401, 402, 403, 404, 405, 406</i>	
515	9012 EL-SPC-019/5	Lufteinlass	<i>Air inlet</i>	<i>Admission d'air</i>	1
		Inhalt: 403 (2x), 407, 408, 409	<i>Contents: 403 (2x), 407, 408, 409</i>	<i>Contenu: 403 (2x), 407, 408, 409</i>	

Zur Bestellung und für Rückfragen wenden Sie sich bitte an unsere Service-Abteilung.
 +49 (0) 21 91/7 92 355 •  +49 (0) 21 91/7 92 523 •  service-center@hazet.de

HAZET - WERK Hermann Zerver GmbH & Co. KG •  10 04 61 • D-42804 Remscheid • Germany
 +49 (0) 21 91 / 7 92-0 •  +49 (0) 21 91 / 7 92-375 (National) •  +49 (0) 21 91 / 7 92-400 (International)
www.hazet.de •  info@hazet.de