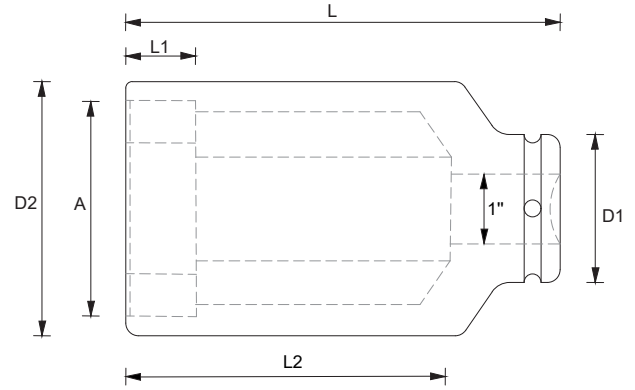


1.1/2'' Kare Sürücülü Havalı Ağır Lokmalar

1.1/2'' Heavy Duty Impact Sockets



Derin Tip / Deep Socket

Parça Part	A	Metrik Metric	L	L1	L2	D1	D2	Ağırlık Weight
No.	mm	#	mm	mm	mm	Ø	Ø	Kg
HLM30-FDI	30	M20	130	21	86	64	86	3.4
HLM32-FDI	32	M22	130	21	86	64	86	3.4
HLM36-FDI	36	M24	130	27	86	68	86	3.4
HLM41-FDI	41	M27	130	27	86	71	86	3.6
HLM46-FDI	46	M30	130	28	86	78	86	3.9
HLM50-FDI	50	M33	130	31	86	83	86	4.0
HLM55-FDI	55	M36	130	35	90	89	86	4.0
HLM60-FDI	60	M39	130	37	90	96	86	4.6
HLM65-FDI	65	M42	130	39	90	97	86	4.6
HLM70-FDI	70	M45	130	41	90	109	86	5.3
HLM75-FDI	75	M48	130	42	90	114	86	5.6
HLM80-FDI	80	M52	130	46	90	118	86	5.7
HLM85-FDI	85	M56	130	49	90	130	86	6.5
HLM90-FDI	90	M60	130	52	90	134	125	6.6
HLM95-FDI	95	M64	130	56	90	137	125	9.0
HLM100-FDI	100	M68	130	56	90	146	125	9.9
HLM105-FDI	105	M72	130	60	137	160	125	10.5
HLM110-FDI	110	M76	137	70	145	163	126	12.2
HLM115-FDI	115	M80	130	71	155	171	126	12.2
HLM120-FDI	120	M85	130	82	155	186	127	15.7
HLM125-FDI	125	M90	130	86	155	188	130	16.0
HLM130-FDI	130	M90	130	86	155	200	130	16.0

Standart Tip / Standard Socket

Parça Part	A	Metrik Metric	L	L1	L2	D1	D2	Ağırlık Weight
No.	mm	#	mm	mm	mm	Ø	Ø	Kg
HLM30-FSI	30	M20	115	19	70	86	64	3.0
HLM32-FSI	32	M22	115	22	70	86	64	3.1
HLM33-FSI	33	M22	115	28	70	86	64	3.1
HLM34-FSI	34	M24	115	28	70	86	68	3.2
HLM36-FSI	36	M24	115	28	70	86	70	3.2
HLM38-FSI	38	M26	115	28	70	86	86	3.2
HLM41-FSI	41	M27	115	28	70	86	86	3.3
HLM46-FSI	46	M30	115	31	70	86	86	3.3
HLM50-FSI	50	M33	115	31	70	86	86	3.6
HLM55-FSI	55	M36	115	34	70	86	86	4.8
HLM60-FSI	60	M39	115	34	70	86	86	4.8
HLM65-FSI	65	M42	115	40	70	86	86	4.8
HLM70-FSI	70	M45	115	40	70	86	107	5.0
HLM75-FSI	75	M48	115	45	70	86	115	7.2
HLM80-FSI	80	M52	115	58	70	86	138	8.0
HLM85-FSI	85	M56	115	60	70	86	138	8.2
HLM90-FSI	90	M60	115	60	70	125	138	8.5
HLM95-FSI	95	M64	115	60	70	125	138	8.8
HLM100-FSI	100	M68	115	60	70	125	145	8.9



Kısa Tip / Short Socket

Parça Part	A	Metrik Metric	L	L1	L2	D1	D2	Ağırlık Weight
No.	mm	#	mm	mm	mm	Ø	Ø	Kg
HLM30-FI	30	M20	100	21	56	87	63	2.6
HLM32-FI	32	M22	100	22	56	87	64	2.6
HLM36-FI	36	M24	100	28	56	87	67	2.7
HLM38-FI	38	M26	100	28	56	87	68	2.7
HLM41-FI	41	M27	100	28	56	87	71	2.8
HLM46-FI	46	M30	100	29	56	87	78	2.9
HLM50-FI	50	M33	100	31	56	87	83	3.0
HLM55-FI	55	M36	100	35	56	87	85	3.1
HLM60-FI	60	M39	100	36	56	87	91	3.5
HLM65-FI	65	M42	100	39	56	87	98	3.5
HLM70-FI	70	M45	100	42	56	87	100	4.0
HLM75-FI	75	M48	100	44	56	87	103	4.1

Farklı ölçülerde imalat yapılabilir / Custom sizes available upon request.