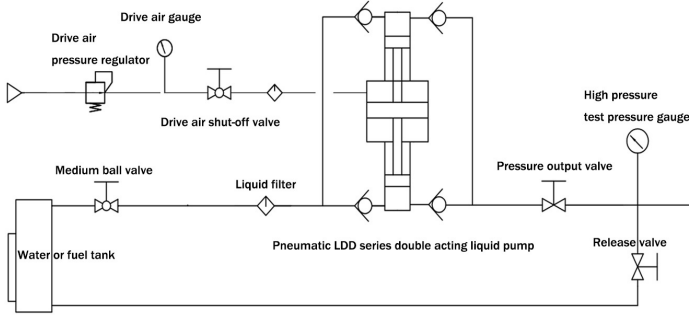




Hidropnömatik Booster Test Pompası Hydropneumatic Booster Test Pump



- » Çalışma basıncı 3500 bar maximum
- » Basınçlandırılan akışkan yağ veya su
- » Maksimum basınçta 8 bar gerektirir
- » Basınçlandırma oranı 100 barda 16:1
- » Basınçlandırma oranı 3500 barda 510:1
- » Flow range between 27 – 1,72 litre/dk
- » Basıncılı hava giriş bağlantısı G1/2"
- » Pressure output 9/16" 18 UNF-B
- » Dahili akışkan tank kapasitesi 15 litre
- » Cihaz ağırlığı 34-50 kg arasında değişir
- » Cihaz menşei Çin, üretici Terek Comp.
- » Teknik destek Surkon tarafından sağlanır



- » Working pressure 3500 bar maximum
- » Pressurised medium oil or water
- » Air pressure range min 2 max 8 bar
- » Pressure ratio at 100 bar 16:1
- » Pressure ratio at 3500 bar 510:1
- » Oil flow range 27 – 1,7 liter/min
- » Air pressure inlet thread G1/2"
- » Pressure output 9/16" 18 UNF-B
- » Internal oil-water tank capacity 15 liter
- » Pump weight from 34 to 50 kg
- » Made in China by Terek Company

Model	Maks. Basıncı Max. Pressure		Basıncı Oranı Pressure Ratio	Maks. Basıncıta Debi Flow at Max. Pressure	Basıncı Portu Pressure Port	Hava Girişi Air Input	Ağırlık Weight
#	Bar	Psi	#	Litre/ dk - Liter/min	inch	#	kg
HPTP100	128	1856	16:1	27.68	NPT 1/2"	G 1/2"	35
HPTP200	224	3248	28:1	15.36	NPT 1/2"	G 1/2"	35
HPTP300	320	4640	40:1	10.24	NPT 3/8"	G 1/2"	35
HPTP500	512	7424	64:1	6.92	NPT 3/8"	G 1/2"	34
HPTP800	800	11600	100:1	3.96	NPT 1/4"	G 1/2"	35
HPTP1000	1040	15080	130:1	3.38	9/16"-18 UNF	G 1/2"	33
HPTP1400	1400	20300	175:1	2.52	9/16"-18 UNF	G 1/2"	34
HPTP2000	2040	29580	255:1	1.72	9/16"-18 UNF	G 1/2"	33
HPTP3000	3200	46400	400:1	1.04	9/16"-18 UNF	G 1/2"	32
HPTP3500	3500	50750	510:1	1.72	9/16"-18 UNF	G 1/2"	40



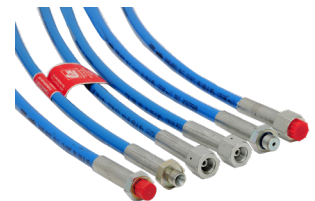
İğne Vana
Needle Valves



Kaplin
Coupling



Nipel
Adapter



Hortum
Hose