

Model Shown:

PA9 Foot Control, PA9H Hand Control

Pumps

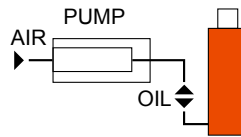


Features

IDEAL FOR POWERING SINGLE-ACTING CYLINDERS AND PORTABLE HYDRAULIC TOOLS.

- Easier to operate than a hand pump, giving you the speed you need at an affordable price.
- Serviceable pump allows for economical repairs.
- Unique bladder design for all-position operation and storage.
- Operates on 3-8 bar shop air, at 570 l.
- Hard-coat anodized aluminum housing.
- Oil filler with integral safety relief minimizes chance of damage to reservoir bladder if overfilling occurs.

Typical Set-Up

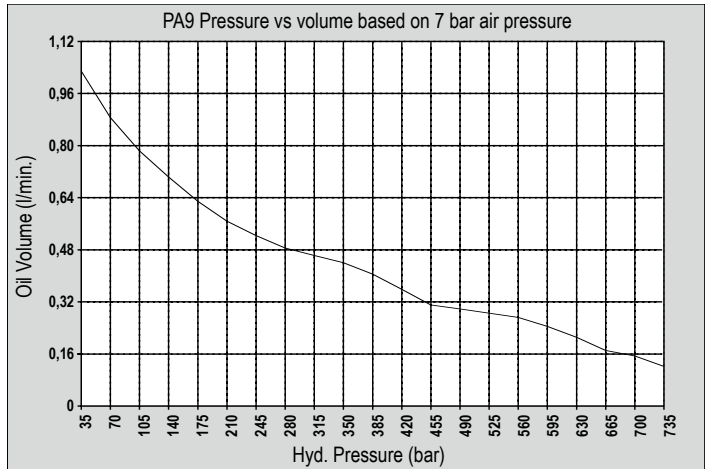


Hook-up for single-acting cylinders

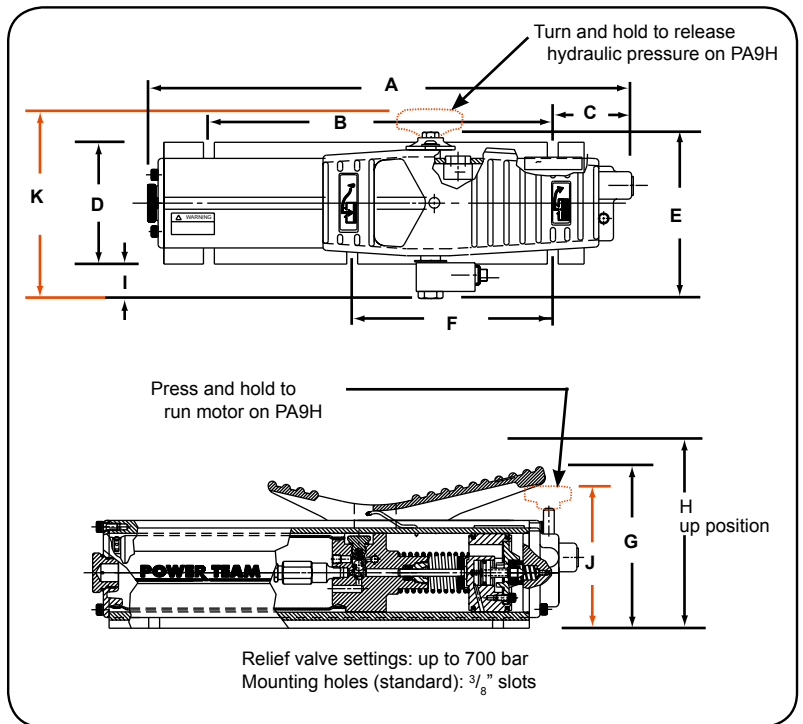
▶ **PA9H Hand Control Pump used in a straightening press.**



▶ **Performance Specifications**



▶ PA9 Foot Control



Pumps

▶ Technical Dimensions

Order No.	A	B	C	D	E	F	G	H	I	J	K
	(mm)	(mm)	(mm)	(mm)	(mm)	(mm)	(mm)	(mm)	(mm)	(mm)	(mm)
PA9	432	305	71,4	108	149	178	142	178	28,2	—	—
PA9H	432	305	71,4	108	—	178	—	178	28,2	122	170

▶ Ordering Information

For Use With Cyl. Type	Order No.	Air Supply Req'd (bar)	Reservoir		Oil Port (in.)	Max. Pressure Output (bar)	Prod. Wt. (kg)
			Oil Cap. (cm ³)	Usable Oil Cap. (cm ³)			
Single-Acting	PA9	3-8	574	549	3/8 NPTF	700	6,8
Single-Acting	PA9H	3-8	574	549	3/8 NPTF	700	6,8