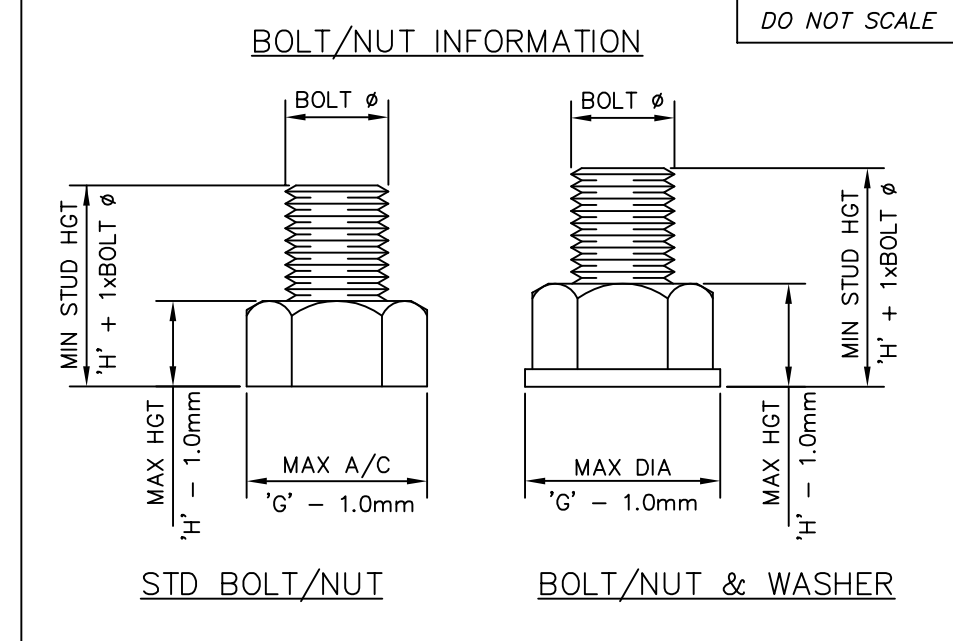
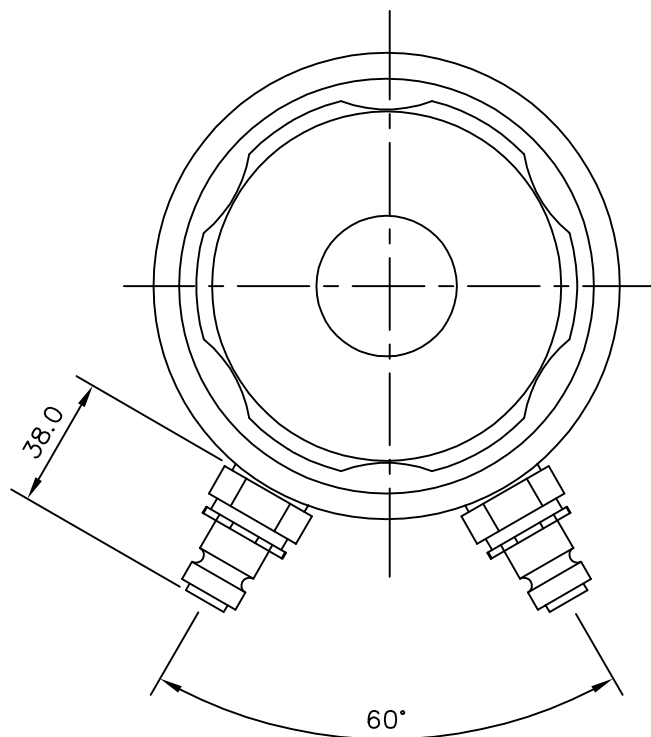
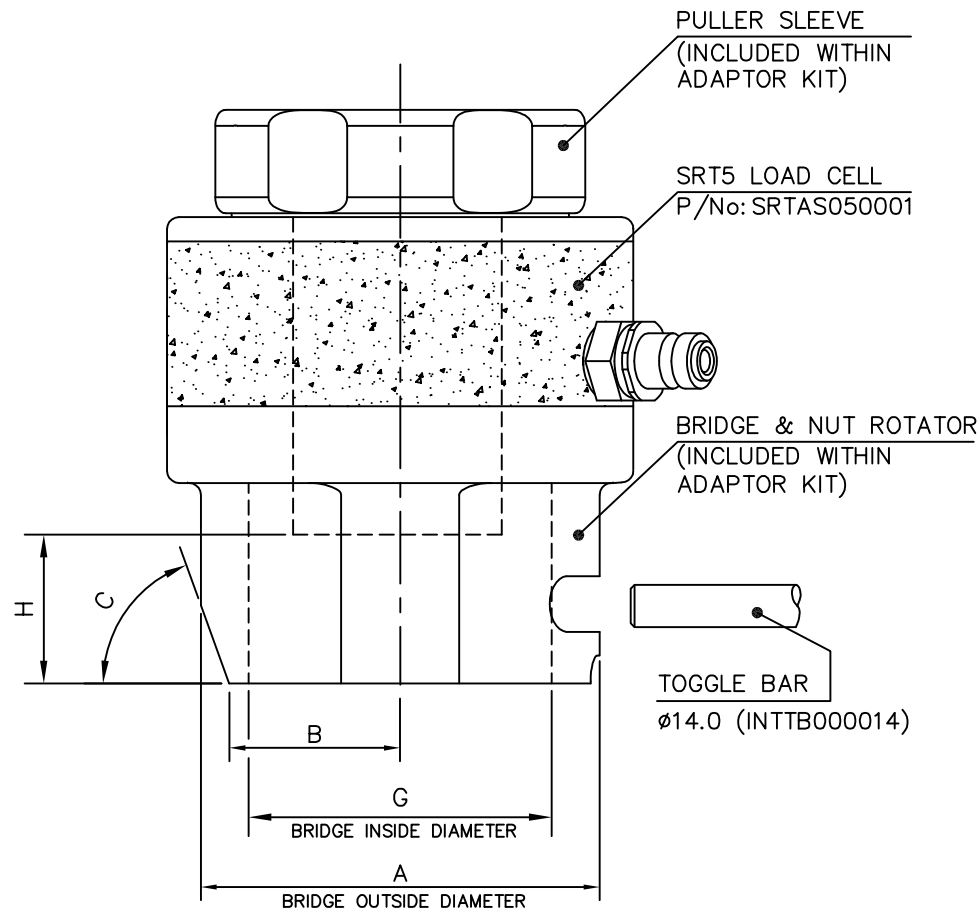
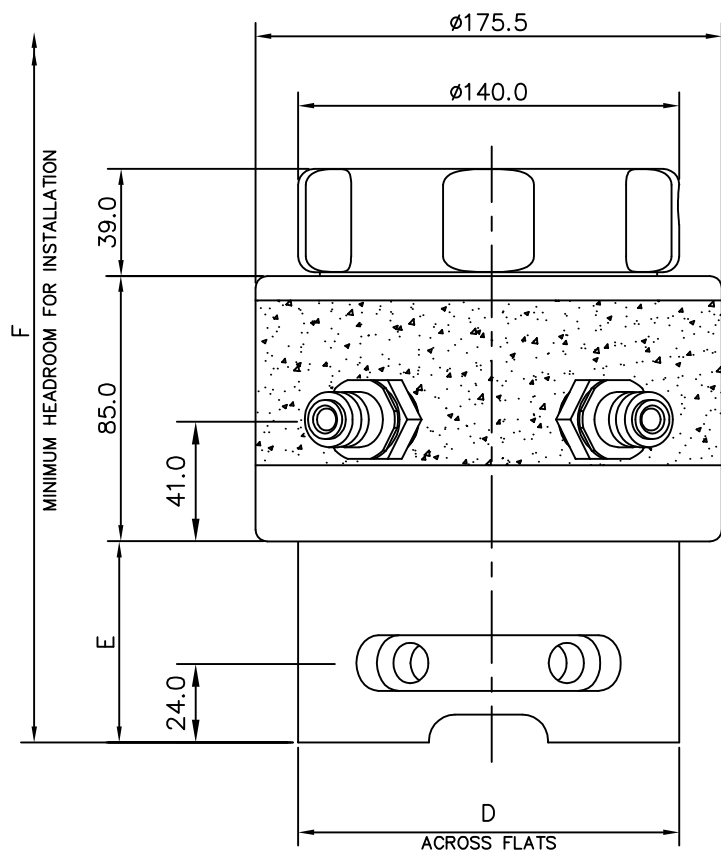


Dimensions in MILLIMETRES



SRT5 TENSIONER SPECIFICATIONS

MAX WORKING PRESSURE : 1500 Bar (21,750 psi)
 MAX STROKE : 10 mm (0.394")
 HYDRAULIC AREA : 10003 mm² (15.50 in²)
 LOAD AT MWP : 1500 kN (337230 lbf)

TENSIONER FEATURES

- AUTOMATIC SPRING RETURN PISTON
- OVERSTROKE ELIMINATOR VALVE
- PISTON STROKE INDICATOR
- QUICK CONNECT ADAPTOR KIT

BOLT DIA	NUT A/F	ADAPTOR KIT PART NUMBER	A mm	B mm	C mm	D mm	E mm	F mm	G mm	H mm
2" 8UN	3-1/8"	SRTAS050004	134.0	52.0	61*	120.0	63.0	248.0	95.5	55.0
2-1/4" 8UN	3-1/2"	SRTAS050006	148.0	58.0	60*	138.0	69.5	261.0	106.5	61.5
2-1/2" 8UN	3-7/8"	SRTAS050008	153.0	63.0	60*	153.0	76.0	274.0	118.0	68.0
2-3/4" 8UN	4-1/4"	SRTAS050010	165.0	70.0	60*	156.0	82.0	286.0	129.5	74.0

M52 x 5.0	80mm	SRTAS050012	134.0	52.0	61*	120.0	63.0	249.0	95.5	46.0
M56 x 5.5	85mm	SRTAS050013	148.0	58.0	60*	138.0	69.5	260.0	106.5	49.0
M60 x 5.5	90mm	SRTAS050015	148.0	58.0	60*	138.0	69.5	264.0	106.5	52.0
M64 x 6.0	95mm	SRTAS050016	153.0	63.0	60*	153.0	76.0	274.0	118.0	55.0
M68 x 6.0	100mm	SRTAS050018	153.0	63.0	60*	153.0	76.0	278.0	118.0	58.0
M70 x 6.0	100mm	SRTAS050020	153.0	63.0	60*	153.0	76.0	280.0	118.0	58.0

NOTE: METRIC ADAPTOR KITS DESIGNED TO SUIT NUTS TO BS3692 (i.e. NUT HEIGHT APPROX 0.8 x BOLT DIA)

© SPX Bolting Systems

Rev	Revision Description	Date	Signature	Checked
1	BOLT DATA ADDED	25/9/13	D.CAMPBELL	A.DONALDSON

The information on this sheet is on licence to SPX Bolting Systems. It is confidential and must only be used for the purpose for which it is supplied. It must not be copied or communicated to any third party without permission in writing from SPX Bolting Systems.

General Tol. ±0.25 US0	Quantity -	Material -	Heat Treatment -	Finish Processes -
Surface Finish 3.2 µm US0	Drawn by I.O'BRIEN		Checked by T.DODDS	Date 04/06/2013
Geometric Tol. ◎ 0.10 // 0.20 ⊕ 0.25	File Name -		Scale NTS	Title SRT5 HYDRAULIC TENSIONER GA
Drawing Number SRTGA050001			Edition 1	Sheet 1/1

SPX